

RACK RATE 2024



Rack Rate - 2024

High Season
01 Jan - 30 Apr 2024
01 Aug - 31 Dec 2024

Low Season
01 May - 31 July 2024

Lodge	Rooms	Rate	Rate
Shiduli Private Game Lodge			
Luxury Suite	30	R5 870	R4 500
Royal Suite	1	R7 120	R7 120
Kuname Lodge			
Luxury Suite	4	R8 810	R6 640
Premier Suite	1	R9 340	R8 190
Kuname Manor House (sleeps 6 min 4 pax to confirm the Manor House)	1	R9 340	R8 190
Chisomo Safari Camp	22	R6 290	R4 560
Becks Safari Lodge	11	R9 040	R8 130
Karongwe River Lodge			
Luxury Suite	5	R7 740	R4 650
Family Suite (Min 3 guest)	2	R7 740	R4 650
Executive Suite	2	R8 190	R6 570
Presidential Suite	2	R8 610	R7 090

Group Rates min 10 rms + 1 FOC

Lodge	Rooms	Rate	Rate
Shiduli Private Game Lodge			
Luxury Suite	30	R5 720	R4 380
Royal Suite	1	R6 940	R6 940
Kuname Lodge			
Luxury Suite	4	R8 580	R6 470
Premier Suite	1	R9 100	R7 990
Kuname Manor House (sleeps 6 min 4 pax to confirm the Manor House)	1	R9 100	R7 990
Chisomo Safari Camp	22	R6 130	R4 450
Becks Safari Lodge	11	R8 820	R7 930
Karongwe River Lodge			
Luxury Suite	5	R7 550	R4 540
Family Suite (Min 3 guest)	2	R7 550	R4 540
Executive Suite	2	R7 980	R6 410
Presidential Suite	2	R8 390	R6 910

**Rates above are quoted per person per night sharing and inclusive of 15% VAT*

** Kuname Manor House - sleeps six people and is children friendly * Single supplement based on 40%*



Road Access to the Karongwe Lodges

Road Transfer Rates 2024		1 Pax	2 Pax	3 Pax	4 Pax	5 Pax	6 Pax
Hoedspruit Airport to Karongwe Lodges	KM 66 km	R890	R790	R690	R580	R490	Quote given on request
KMIA / MQP Airport to Karongwe Lodges	KM 189 km	R2700	R1560	R1180	R1070	R930	Quote given on request
Phalaborwa Airport to Karongwe Lodges	KM 102 km	Quote given on request					
OR Tambo to Karongwe Lodges	KM 440 km	Quote given on request					

* Above transfer rates are Nett and Non-Commissionable and charged per person per one way and are subject to change due to fuel price fluctuations.

General terms and conditions

Rate Includes

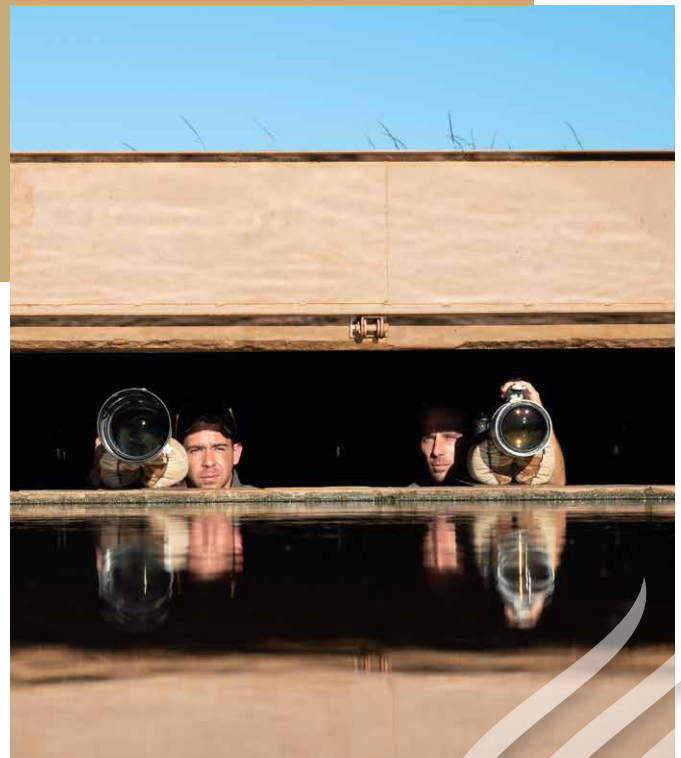
- All meals, teas, coffees and snacks.
- Accommodation.
- Dawn and dusk safaris in open game drive vehicles.
- Drinks on dusk safaris are limited to one per person with a choice of local beer, wine or soft drink.
- All local house wines and beers are now included at Becks Safari Lodge only.
- Limited Wifi at all lodges.
- Reserve Fees are all included in the per person per night cost.
- Any transfers from Southern boom gate are included.

Rate Excludes

- Airport and road transfers, including chartered flights landing at Hoedspruit Civil Air Base.
- Mini Bar, curio, telephone, spa and laundry expenses.
- Premium and imported brands.

General

- Single supplement of 40%.
- Children are welcome at Karongwe Portfolio excluding Kuname and Becks Safari Lodge and would not include any triple rooms requests.
- Children between 0 and 2 years old are accommodated on a complimentary basis.
- Children from the ages of 3 years to 11 years old are accommodated at 50% of the adult tariff, sharing a family room with adults.
- Children 12 years and older are considered adults and pay the applicable tariff.
- Driver/Guide rates apply which do not include game drives R1750.00pppn.
- FOC policy – 16 guests or more 1 driver or guide free of charge.
- Children under 6 yrs are not permitted on any Game activity unless approved by the Lodge Management onsite, or prior approval by Directors is given. (Children are required to be accompanied by an adult on Game activity). Securing a private vehicle will not guarantee leniency on this policy.



Payment Details

Credit card	Please advise card type, number, expiry date, card holders name and passport number.
Bank transfers	Shiduli and Kuname/ Chisomo/Karongwe River & Bush (Impulupudi Game Lodge Pty Ltd)
Bank	Standard Bank – Nigel
Branch code	12242
Account No	30291240

Payments to be made in South African Rand/ZAR, a copy of the remittance to be emailed to reservations@karongwepportfolio.com and quote your reservation number.



General

- Bushwalks are an optional extra, and only arranged at the Lodge, subject to conditions. This activity is also available for limited duration and is subject to approval on the ground, it is also subject to game movement and Karongwe Lodges reserves the right not to offer based on the safety of our guests. There is an additional cost for this activity and may not be exchanged for a normal game activity.

Deposits

- No reservation is secure without a deposit.
- A deposit equivalent to 25% of the total accommodation is required within 7 days of confirmation for individuals (FIT's) and within 14 days of confirmation 10% is required for a group to secure a reservation. For reservations, less than 30 days prior to arrival for individuals and groups, full pre-payment is required.
- The balance of the accommodation account is to be settled 30 days prior to arrival or, if the period is less, full prepayment will apply.
- For groups, we require a 10% deposit and final commitment to confirm the reservation 90 days prior to arrival.

Cancellation fees for Individual Guests

- Karongwe Portfolio reserve the right to charge a cancellation fee equivalent to any direct costs incurred by it in attending to the reservation plus a 10% administration fee for any individual bookings cancelled more than 42 days prior to the date of the scheduled arrival.
- In the event of a cancellation, less than 42 days and more than 30 days prior to the date of the scheduled arrival, a cancellation fee in the sum equivalent to 25% of the full account will be incurred.
- In the event of a cancellation, less than 30 days prior to the date of the scheduled arrival, a cancellation fee in the sum equivalent to the full account will be charged (100%).

COVID 19 Cancellation Policy

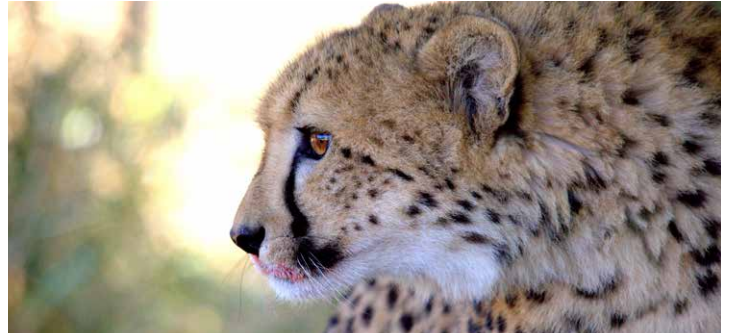
Valid until further notice and subject to Government Regulations

Please note that it is important that the guest/s MUST BE PREVENTED from travelling due to Covid, and then we will cancel reservation and waiver any penalties as a result thereof if necessary.

* **COVID-related travel conditions include:**

- The Government in the guest's country of origin imposes a travel ban and guests are unable to travel
- The Government in the guest's destination country (or transit country) imposes a travel ban and guests are unable to travel
- The Government in the guest's country of origin OR destination country imposes a mandatory quarantine and guests are unable OR unwilling to travel
- International flights are cancelled and guests are unable to travel
- Guests are prevented from boarding a flight on account of health screening
- Guests have contracted COVID-19 prior to arrival OR while in-country and are unable to travel
- If the property in-country has to close due to COVID-19 reasons and is unable to fulfil their obligation for clients travel

For all other Cancellations, our standard cancellation terms and conditions apply. For conditions of postponing or re-instating of cancelled booking as a result of COVID 19, please contact Reservations Office directly.



GET IN TOUCH



+27 (0) 11 817 5560



www.karongweportfolio.com



reservations@karongweportfolio.com